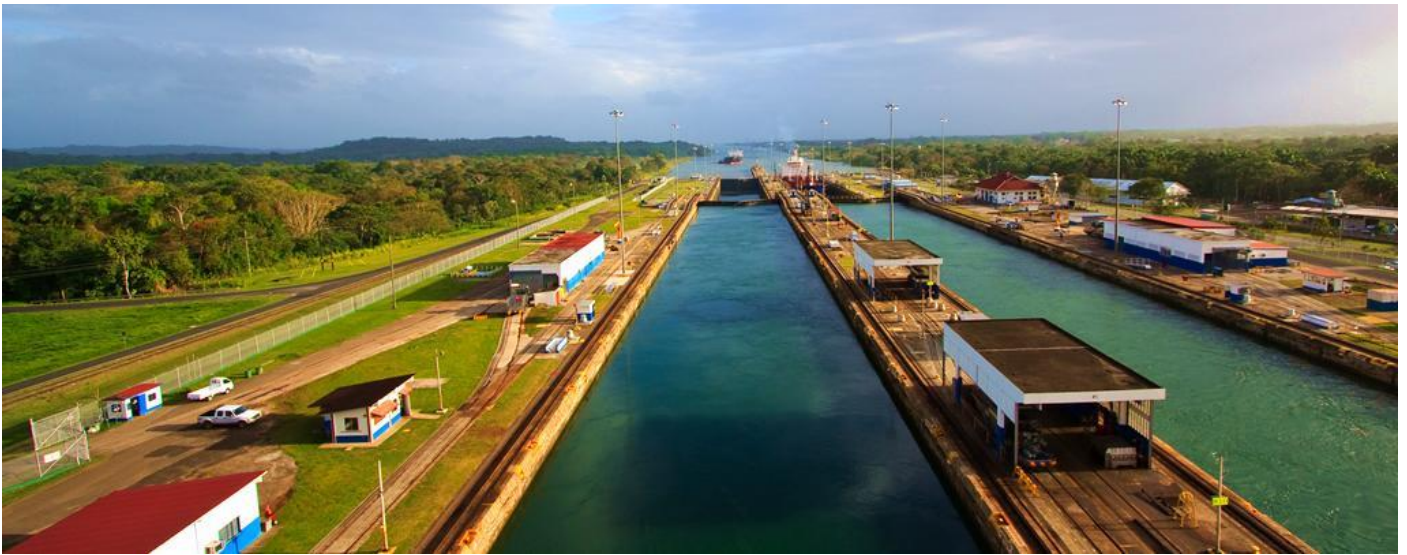
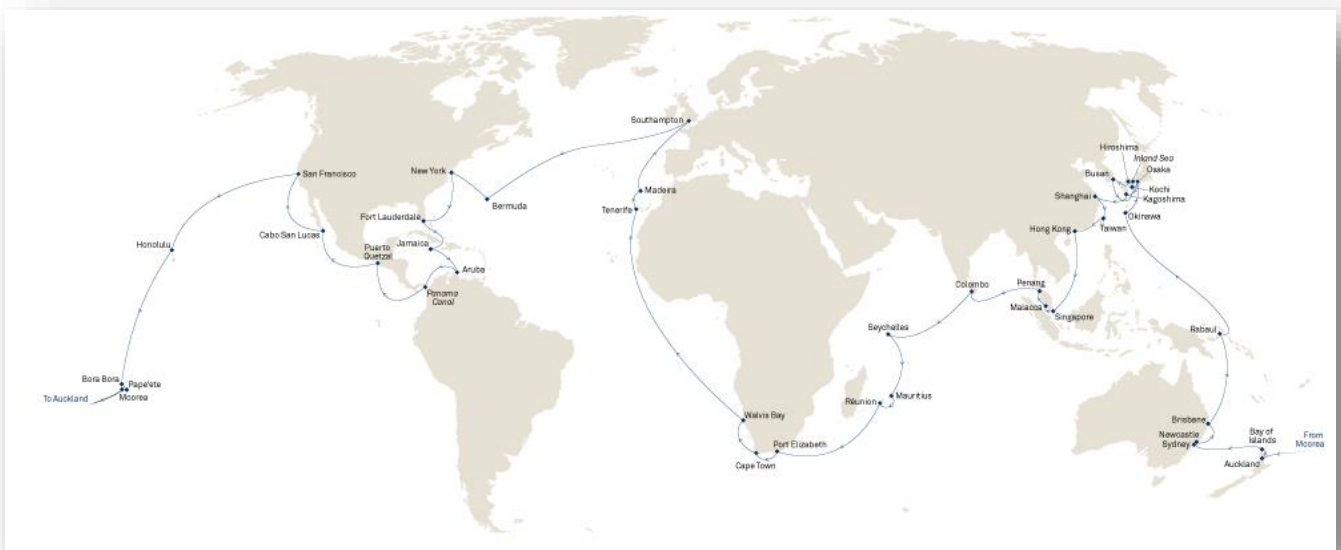


Southampton to Southampton
122 nights
Q802H
7 January to 10 May 2018

Queen Elizabeth's 122-night circumnavigation touches shore several times in the Americas. You'll then head Down Under, via Hawaii and French Polynesia, and delve into the incredible diversity of Asia. A third ocean crossing leads around southern Africa then home to Southampton.



Panama Canal



DATE	MONTH	DESTINATION
10	January	Southampton, United Kingdom
11-13	January	At Sea
14	January	Hamilton, Bermuda
15	January	At Sea
16-17	January	New York, USA
18-19	January	At Sea
20	January	Fort Lauderdale, Florida, USA
21	January	At Sea
22	January	Ocho Rios, Jamaica
23	January	At Sea
24	January	Aruba
25	January	At Sea
26	January	Full Transit of Panama Canal
27-28	January	At Sea
29	January	Puetro Quetzal, Guatemala
30-31	January	Perth, Australia (from Fremantle)
01	February	Cabo San Lucas, Mexico – anchor port
02-03	February	At Sea
04-05	February	San Francisco, USA
06-09	February	At Sea
10	February	Honolulu, Hawaii
11-14	February	At Sea
15	February	Bora Bora, French Polynesia
16	February	Papeete, Tahiti
17	February	Moorea, French Polynesia – anchor
18	February	At Sea
19	February	Cross International Dateline
20-22	February	At Sea
23	February	Auckland, New Zealand
24	February	Bay of Islands, New Zealand – anchor
25-26	February	At Sea
27-28	February	Sydney, Australia
01	March	Newcastle, Australia – possible anchor
02	March	At Sea
03	March	Brisbane, Australia
04-06	March	At Sea
07	March	Rabaul, Papua New Guinea
08-12	March	At Sea
13	March	Okinawa, Japan
14	March	At Sea
15-16	March	Osaka, Japan
16	March	Cruising Inland Sea
16-17	March	Hiroshima, Japan
18	March	Kanmon Strait
19	March	Busan, South Korea
20	March	At Sea
21	March	Kochi, Shikoku, Japan
22	March	Osaka, Japan
23	March	At Sea
24	March	Kagoshima, Japan
25	March	At Sea
26	March	Shanghai, China

27	March	At Sea
28	March	Keelung, Taiwan
29	March	At Sea
30-31	March	Hong Kong, China
01-03	April	At Sea
04	April	Singapore
05	April	Malacca, Malaysia – anchor port
06	April	Penang, Malaysia – possible anchor port
07-08	April	At Sea
09	April	Colombo, Sri Lanka
10-12	April	At Sea
13	April	Port Victoria, Seychelles
14-15	April	At Sea
16	April	Mauritius (from Port Louis)
17	April	Reunion, Reunion
18-20	April	At Sea
21	April	Port Elizabeth
22	April	At Sea
23-24	April	Cape Town, South Africa
25	April	At Sea
26	April	Walvis Bay, Namibia – possible anchor port
27-30	April	At Sea
01-04	May	At Sea
05	May	Tenerife
06	May	Madeira, Portugal
07-09	May	At Sea
10	May	Southampton, United Kingdom

This itinerary is subject to change without prior notice.